

# UPHOLSTERED SEAT PAD



Navy Seat Pad suitable for models: 1006 Navy Collection, 111 Navy Collection, Heritage Collection, Hudson Collection, Icon Collection & Soso Collection.



Model-specific seat pads in Maharam Ledger 025 Obsidian available for 20-06 Collection, Emeco Stool Collection & Kong Collection. Other fabrics upon request.

All seat pads are handmade using durable, GreenGuard Gold certified fabric, fire-rated foam, and 100% recycled plastic substrates.

Upholstery material and foam comply with CAL 117.

Thickness 5/8" (16mm).

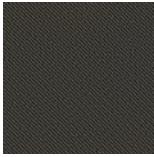
COM/COL also offered. Fabric required: 0.25 yd / 0.23 m fabric. 3.5 sq. ft / 0.33 sq. m leather

## KVADRAT REFLECT

100% Post-consumer recycled polyester



114



184



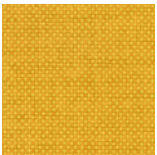
674



944

## MAHARAM MODE

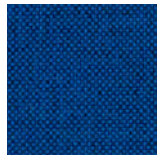
80% Post-consumer recycled polyester



015 Goldenrod



022 Vermilion



032 Angelfish



040 Bonsai

## SUNBRELLA HERITAGE

50% Recycled Sunbrella acrylic. Suitable for outdoor use.



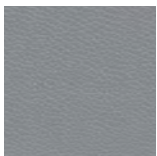
Papyrus



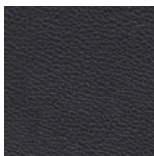
Granite

## MAHARAM BASK

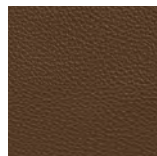
Leather



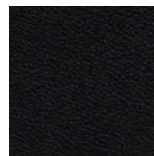
006 Cobble



002 Cast



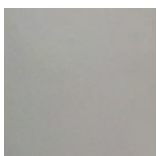
031 Embark



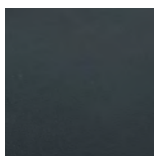
001 Apollo

## MAHARAM LEDGER

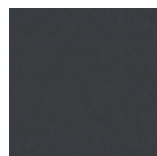
Leather alternative. 100% Polyurethane. Wipeable.



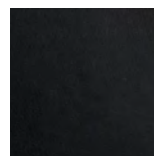
028 Dove



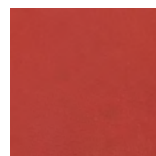
045 Pine



046 Chimney



025 Obsidian



037 Dragon

  
DAILY PIC  
LA CANTINE GOURMANDE





[www.emeco.net](http://www.emeco.net)

805 WEST ELM AVENUE, HANOVER PENNSYLVANIA 17331 USA, TELEPHONE + 1 717 637 5951, USA CALL TOLL FREE 800 366 5951, E-MAIL: [INFO@EMECO.NET](mailto:INFO@EMECO.NET)