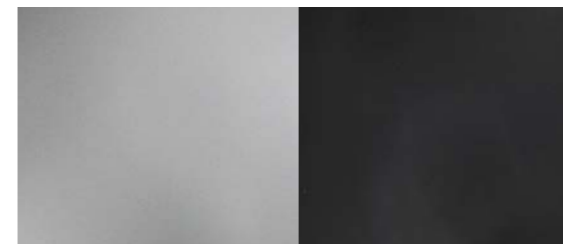


ALFI ALUMINUM by JASPER MORRISON





NATURAL ANODIZED ALUMINUM

BLACK POWDER COATED ALUMINUM



DARK BROWN

DARK GRAY

DARK GREEN

RED

SAND

ALFI ALUMINUM CHAIR, LOW BACK

W: 17" D: 18.¾" H: 24.¼" SH: 18"
 W: 43.2cm D: 48cm H: 61.5cm SH: 45.5cm

ALFI ALUMINUM CHAIR, HIGH BACK

W: 23.⅓" D: 19.⅓" H: 31.½" SH: 18"
 W: 59.2cm D: 50cm H: 80cm SH: 45.5cm

Emeco and Morrison created Alfi Aluminum, an addition to the classic Alfi Collection, leveraging Emeco's heritage of aluminum craftsmanship. Remaining true to its original design, Alfi Aluminum offers additional functionality with extra strength for heavy-duty environments and is suitable for outdoor as well as indoors.

Legs made of non-corrosive recycled aluminum. Seats made of 100% reclaimed post-industrial waste - 92.5% polypropylene combined with 7.5% wood fiber.

